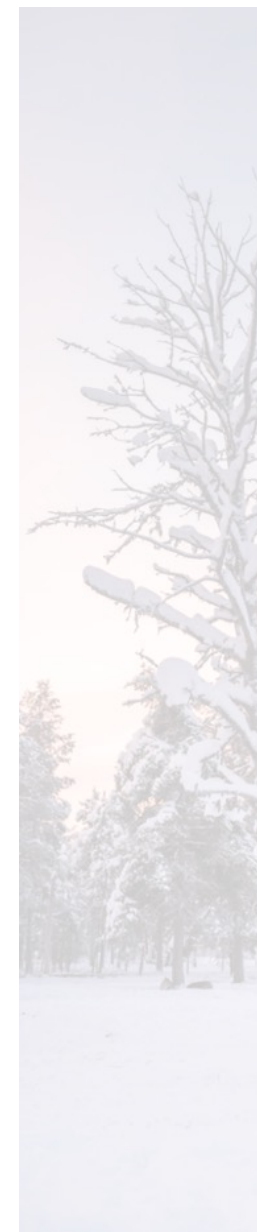




Lodge 67N Hotel

Nestled in a valley surrounded by 7 fells, the village of Äkäslompolo is home to 400 residents 200km north of the Arctic Circle. Located on the doorstep of the Pallas-Yllästunturi National Park, Finland's third largest national park, Äkäslompolo is enveloped by breathtaking scenery and is the perfect setting for Arctic adventure and a magical, festive atmosphere. Reindeer are often seen walking through the village and past hotels and shops.

The small and privately owned Lodge 67N is a beautifully decorated hotel, a short walk from the village centre and within 10-15 minutes of all activities.



Standard Rooms

The 7 standard rooms in total are furnished with a twin beds (extra bed can be added to sleep 3), TV, kitchenette (kettle, coffee maker, microwave, fridge), toilet and shower. Some rooms have balconies. Rooms are 22 – 25 m².

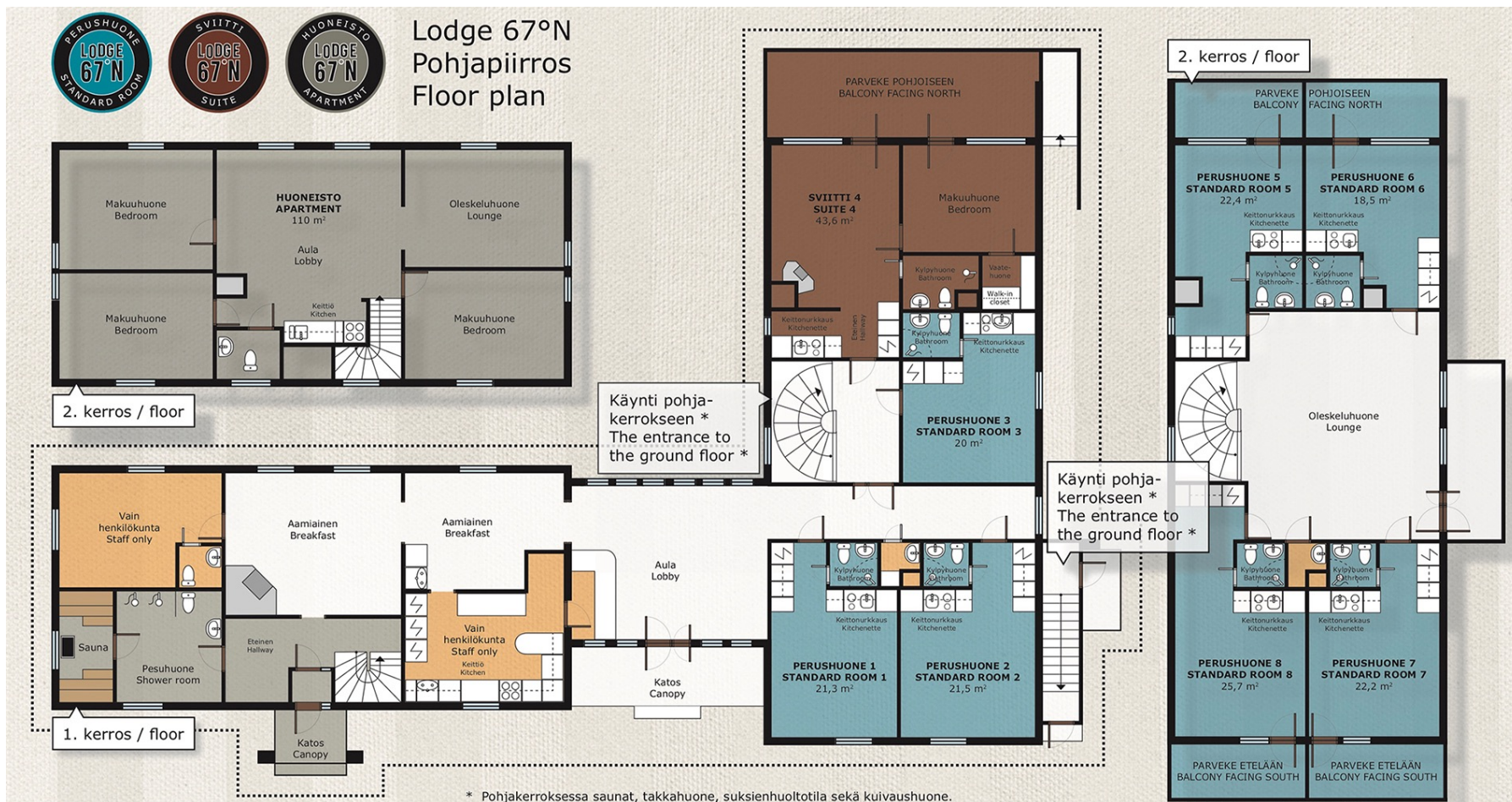
Suite

In the suite there is one bedroom, a living room (with sofa bed for 2 children), a kitchenette (kettle, coffee maker, microwave, fridge), and a bathroom-toilet. A large balcony facing north, to the fell mountains. The suite is 43 m².

Apartment

A cozy apartment with three twin bedrooms, for 6-8 people, private sauna, two toilets, kitchen/dining room, living room, and two showers. The apartment is situated in the same building as the other rooms of Lodge 67°N, but with a separate entrance. There are two floors in the apartment: Entrance, sauna, showers and one toilet are on the ground floor. Bedrooms, dining area, living room and a toilet are upstairs. The apartment is 110 m².





N.B: rooms 7&8 are interconnecting rooms. The internal connecting door is not shown on the floorplan.



Standard Rooms



Suite



Apartment