



Okta Luxury Cabins Break | 23rd-27th December (4 nights and 5 days)



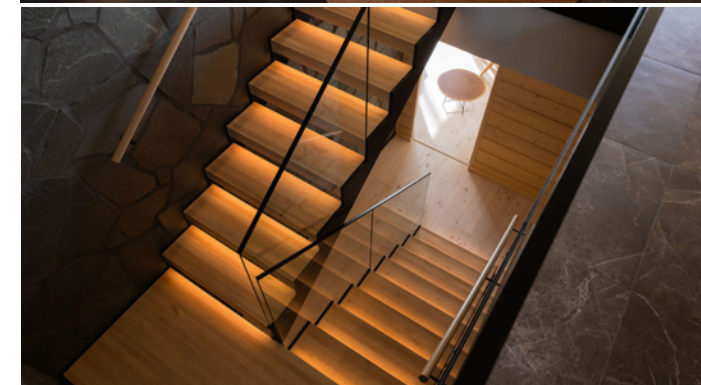
Okta Cabin Amenities:

- 3 bedrooms on the lower ground floor, one bedroom with double bed and bunk beds
 - Sofa bed in the office on the first floor
 - Fireplace
 - Sauna
 - Living room
 - Open-plan kitchen dining area
 - Free wi-fi
 - 2 toilets, 2 wet rooms
-



What's Included:

- Direct flights from London Heathrow to Kittilä with British Airways
- 4 nights' accommodation in the Okta Luxury Cabin
- Breakfast, lunch and dinner with private chef
- 5km day husky safari
- 25km snowmobile safari
- Ice-fishing excursion
- Private visit to Santa in his cabin in the woods
- Snow fun activities on the Santa Day including tobogganing, kick sledding, snowshoe walking children's snowmobiles, making decorations and cookies, BBQ sausages on open fire.
- Thermal Clothing (boots and outer suit)
- Private transfers to and from the airport and activities



Sample Itinerary

Day 1 Afternoon: arrive at Kittilä Airport and transfer to your cabin (about 40 minutes). Thermal clothing will be delivered to your cabin.

Late lunch to your cabin.

Dinner in your cabin.

Day 2 *Breakfast in your cabin.*

Morning: Visit to a Wilderness Cabin for Snow Fun Activities & Private Visit to Santa

Transfer to a nearby wilderness location (approximately 10 minutes by coach) for an Arctic Circle ceremony and various snow activities, including tandem skiing, snowshoe walking, kick sledging, tobogganing, and children's snowmobiling. Indoors, you can enjoy decorating gingerbread cookies and making Christmas decorations.

Lunch will be served throughout the day. Each family will receive an invitation from Santa with your scheduled time for a visit. The visit to Santa begins with a short snowmobile ride, followed by a reindeer sleigh ride to Santa's cabin, located in a secluded forest setting. Each family will have a private audience with Santa, and each child will receive a soft toy as a gift.

This remote location does not have electricity or running water. The cabin where you have lunch is lit with lamps and candles, providing ample light, and there will be plenty of water, juice, tea, coffee, and lunch available. The outdoor area is lit with fires and candles, though there will be plenty of natural light during the day. There are also private outdoor Arctic toilets.

Mid-Afternoon: Relax & Explore

After arriving back at your cabin around 15:00, enjoy free time to relax and explore—warm up by the fire, unwind in the sauna, or head back out for more snowy fun!

Dinner in your cabin.

Day 3 *Breakfast in your cabin.*

Morning: 5km Husky Safari and Visit to the Husky Farm



Experience the thrill of a husky safari at a working husky farm, where you'll meet some of the friendly and energetic dogs that call Lapland home. After an introduction to mushing, you'll take the lead and embark on an unforgettable 5km husky safari through the breathtaking Arctic wilderness. After your ride, warm up with a hot drink by the fire and take the opportunity to ask the mushers about the lives of these incredible sled dogs—how they train, race, and thrive in the snowy landscapes of Lapland.

Lunch in your cabin.

Afternoon: Relax & Explore

The afternoon is free for you to enjoy as you wish—relax in your cabin, go downhill skiing just 10 minutes away by taxi, or explore additional activities available to book in Lapland, such as ice fishing or cross-country skiing.

Dinner in your cabin.

Day 4 *Breakfast in your cabin and check-out*

Morning: 3km Reindeer Safari

Transfer to Hyyverova, where you will embark on a magical 3 km reindeer safari through the serene, snow-covered pine forest. Seated comfortably in a traditional sleigh, you'll glide through the winter landscape, led by one of Lapland's most iconic animals. Along the way, a local reindeer herder will share fascinating insights into their way of life, traditions, and the deep connection between the Sámi people and their reindeer. After the safari, warm up inside a cosy kota (a traditional wooden tepee), where you'll be served steaming tea, coffee, and hot berry juice—a perfect way to soak in the atmosphere of the Arctic wilderness.

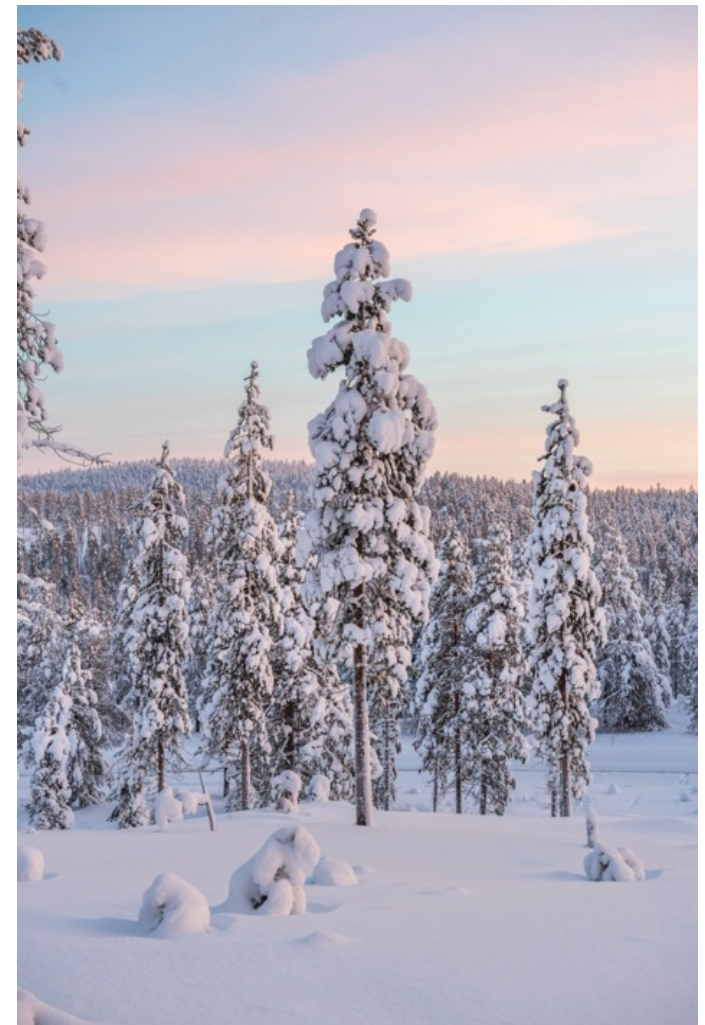
Lunch in your cabin.

Afternoon: 25km Snowmobile Safari

Embark on a snowmobile safari through the untouched Lappish wilderness. After receiving driving instructions, safety equipment, and advice, you'll set off on the safari. Two adults will share a snowmobile, and children (or those who do not wish to drive) will ride in a sleigh pulled behind the guide's snowmobiles.

The safari covers 25 km, with a stop halfway in the forest for warm drinks and snacks. As two adults share each snowmobile, you can swap drivers after the break.

Dinner in your cabin.



Day 5 *Breakfast in your cabin and check-out*

Morning: Ice-Fishing at Lake Luosu

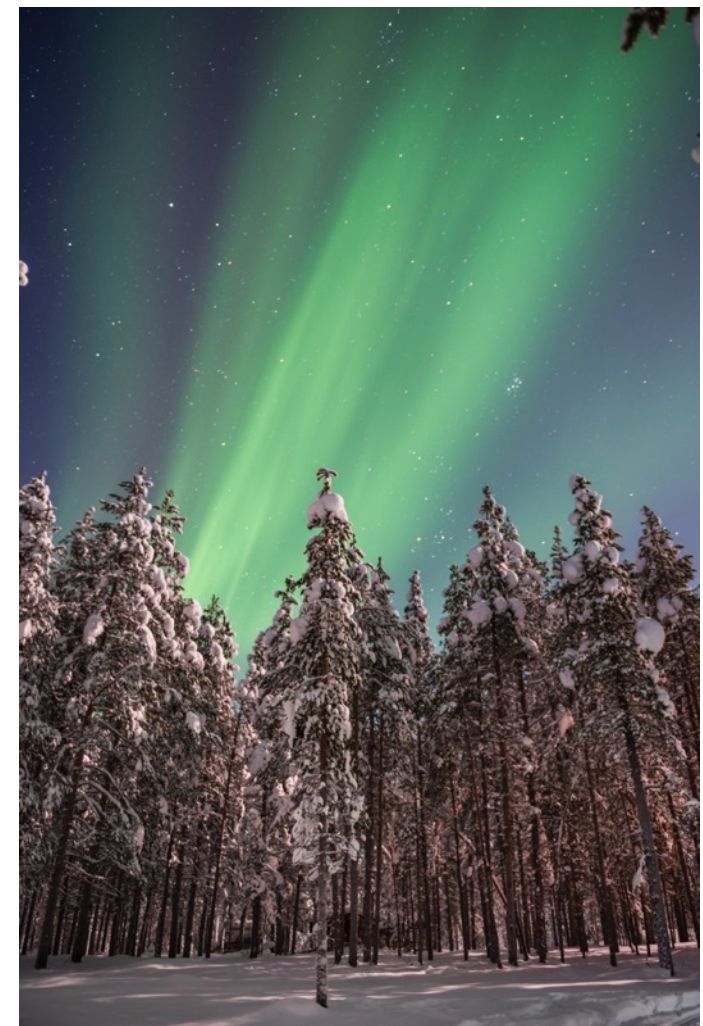
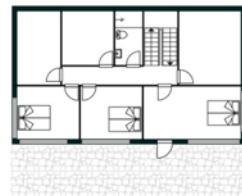
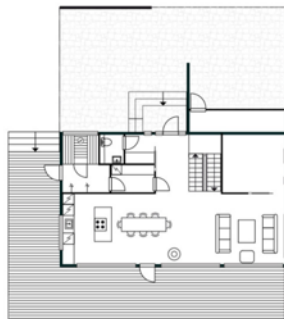
At the serene Luosu Lake, surrounded by snow-laden trees and the vast Arctic wilderness, you'll experience the peaceful art of ice fishing. Step onto the thick, glistening ice and drill a hole, feeling the crisp winter air as you lower your line into the dark, icy waters below. Patience is key as you wait in anticipation, watching for the slightest movement that signals a catch. Whether you reel in a fish or simply soak in the tranquillity of the frozen landscape, this traditional Nordic pastime offers a moment of quiet reflection and a true taste of life in Lapland.

Lunch at Rohki Restaurant

Transfer to Kittilä Airport

Notes:

- * Please note that this is a sample itinerary, and the order of activities may change.
- * A list of optional activities will be provided upon arrival in Lapland.
- * A valid driver's license is required to drive a snowmobile.





Flight Information

Provisional flight times with our British Airways charter:

Day of Departure:	Depart London Heathrow 07:00	Arrive Kittilä 12:45
Day of Return:	Depart Kittilä Airport 18:00	Arrive London Heathrow 19:30



Additional Information

Location: Ylläs region, Finland, approx. 200km north of the Arctic Circle

Average Temperatures: 0C to -45C

Daylight: 14th – 31st December 0 hours of daylight. *This is the special time of Kaamos or Polar Night when the sun does not go above the horizon. There is a twilight light between 10:00 and 14:00.*

Northern Lights: This is a great location to see the Northern Lights. Should the Aurora appear, you will be able to see them from your cabin and do not need to book an additional excursion.

Santa Experience: If your children write letters to Santa, we can make sure he receives them before your visit. Each child will receive a special letter from Santa, personally inviting them to Lapland, as well as a soft toy to cherish during their visit.

